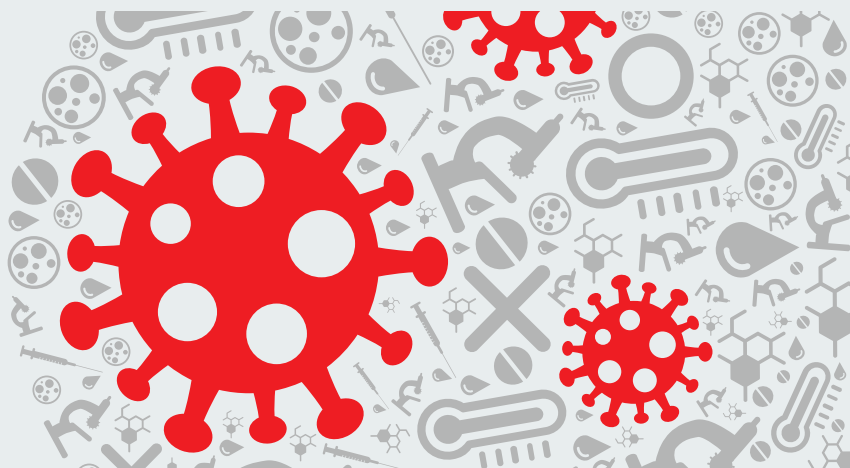




Los Angeles County Office of Education

**Priorities during the Coronavirus
(COVID-19) Pandemic**



**Los Angeles County
Office of Education**

Serving Students • Supporting Communities
Leading Educators

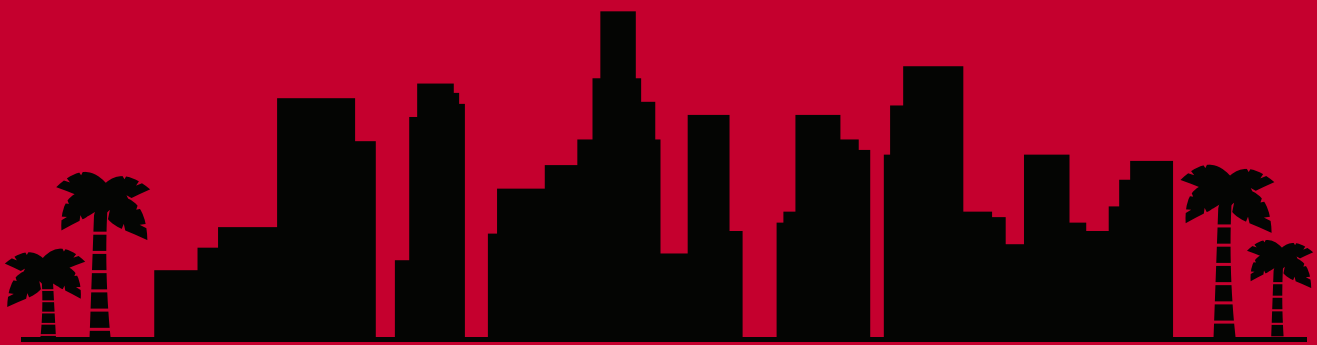
LACOE Priority Areas in Response to COVID-19

On April 1, Superintendent Debra Duardo announced her recommendation that school campuses in Los Angeles County should remain closed through the end of the academic year. While campuses may be closed, school is still in session and learning must continue. However, school is more than a place of learning for our students. For many, it is a place that supports physical and emotional needs.

LACOE's top priority is to support the county's 80 districts and charter schools in addressing the disruption to school services and learning; the anxiety, fear, separation and uncertainty that students and families are experiencing; and the needs of students, educators and staff at the community and countywide level. LACOE also is focused on supporting its own staff and the students and families served by its Juvenile Court Schools, two specialized high schools and county community schools.

LACOE is working diligently with school districts and partners across the county to ensure that:

1. Students' physical, social and emotional needs are met, prioritizing safety, nutrition and mental wellness.
2. Students successfully engage in instruction via distance learning. Principals, educators and school staff utilize available resources and training to deliver instruction and support students.
3. District leaders, principals, teachers, school staff and LACOE personnel are safe and healthy and have social and emotional support.
4. District leaders have the guidance and resources necessary to plan for the future, and are offered frequent opportunities to engage with LACOE staff and other partners (district leaders, philanthropy, county agencies and others) to identify challenges and co-develop solutions.



LACOE's Response to COVID-19

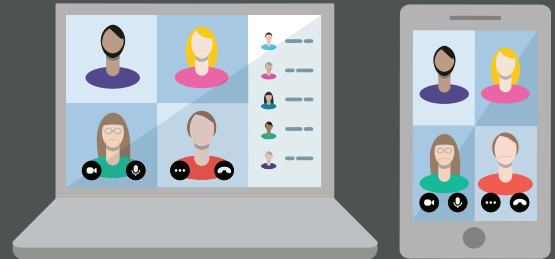
LACOE staff are coordinating with district and school leaders (including LACOE-operated schools), and philanthropic partners as well as local and state agencies. Here's how:

DISTRICT SUPPORT

Engaging Leaders

LACOE hosts regular conference calls led by Dr. Debra Duardo with all 80 district superintendents in Los Angeles County and has a fully staffed 24/7 support line open for superintendents.

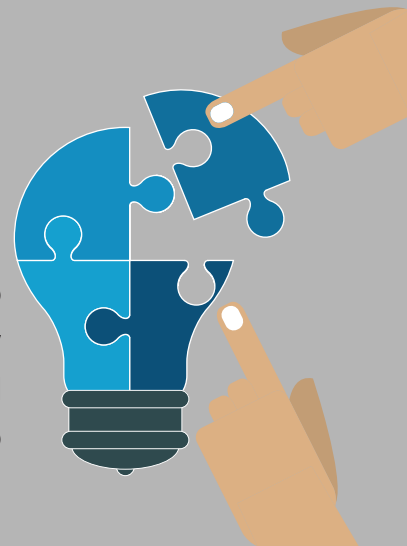
- These calls offer updates from our ongoing coordination with state and county agency partners and provide superintendents with a forum to ask questions, elevate challenges and collaborate to solve problems. Topics range from food distribution to delivering instruction to supporting special populations.



Building Capacity

LACOE department leaders host regular level-alike meetings for staff in school districts across Los Angeles County and will continue to do so as necessary.

- Level-alike meetings allow subject-matter experts within districts to engage collaboratively to share updates, receive guidance, identify issues and develop recommendations. These meetings are facilitated by their counterparts at LACOE. Topics range from special education to parent and family engagement to communications.



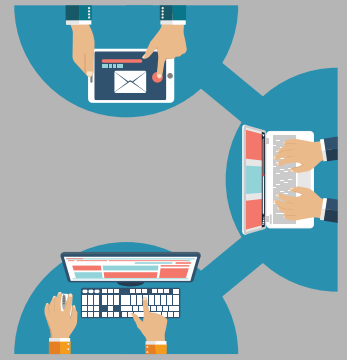
Listening

LACOE convenes a representative group of superintendents from across Los Angeles County to serve on LACOE's Superintendent Advisory Council during the COVID-19 emergency school district response. The council meets regularly, and members provide valuable expertise and ideas on how to address the unique issues at hand during this pandemic. LACOE engages parents and students through written communication, meetings, phone calls and individual connections with staff.



Sharing Information

LACOE communicates regular COVID-19 educational updates to the 80 superintendents as well as all partners, highlights best practices and provides resources and videos through a COVID-19 dedicated webpage.



COUNTY COORDINATION

Whole Child Focus

LACOE coordinates with partner agencies to identify opportunities for combining forces and addressing gaps and to inform countywide planning and response. LACOE's coordination efforts seek to ensure that students are safe and healthy, that they are accessing instruction and that they have the social and emotional support they and their families need.



Coordination Across Agencies

LACOE staff work closely with the Los Angeles County Office of Emergency Management Operations Center to share information, escalate issues and respond to challenges alongside other county agencies, including the Department of Public Health, Department of Mental Health, Department of Children and Family Services, Los Angeles Homeless Services Authority and Probation Department.



- LACOE and other agencies coordinate to create dashboards to help communities track school closures and find meal distribution locations.

LOCAL, STATE AND FEDERAL ADVOCACY

Strengthening Partnerships for Impact

The Greater LA Education Foundation, the philanthropic arm of LACOE, is engaging philanthropy, non-profit and corporate entities across the county to strengthen partnerships and support the distribution of resources for those in need.

- Greater LA created the COVID-19 Education Response Effort to immediately respond to the needs of local school districts and families. Contributions already received increase access to food, basic needs, technology and academic support for students and families, including access to vital technology to support distance learning.



To learn more about Greater LA Education Foundation's efforts to advance equity and innovation in education, please [click here](#).

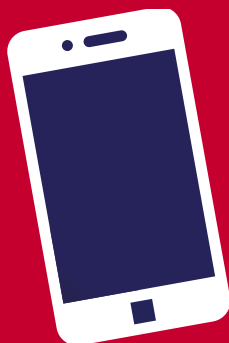
Education Policy

LACOE is constantly assessing the implications of existing state, federal and local policy for students and families, particularly for our most vulnerable youth. LACOE will continue to offer guidance and collaborate with federal, state and local education officials to address our county's needs.



Funding

LACOE continues to monitor federal developments following the passage of the federal CARES Act, as well as the California state budget, and will provide ongoing guidance to districts as more information becomes available.



Stay
connected!

We are all stronger together. Share how you, your colleagues or your students and families are rising to the challenge by emailing communications@laoe.edu with photos, tips or experiences from your school or district.

You can also find our regular updates for schools and districts as well as additional resources for schools [here](#).



**Los Angeles County
Office of Education**