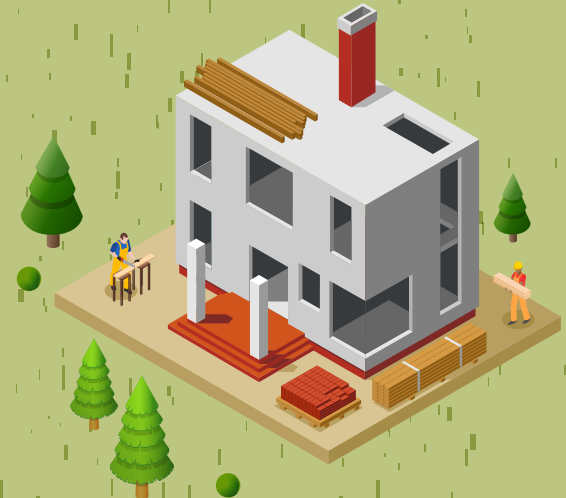


# GUIDE TO ENGAGING DISTRICT LEADERS

*Two-Hour Facilitation Guide for SEA and District Leaders to Explore Through-Year Assessments*



**The purpose of this guide is to surface strengths and opportunities in your assessment system, and to determine if a through-year assessment might be right for our state and its districts.**

---

## **Guidance:**

Use this agenda to host a two-hour discussion with district leaders to help them learn about and gather their input on moving to a through-year assessment or modify it slightly to gain buy-in for a through-year assessment that has already been decided upon.

Participants should include district superintendents and cabinet members in charge of assessment, instruction, student services and data systems and measurement.

## **Pre-work:**

Consider asking participants to read **this resource** and/or watch **this webinar** to better understand what through-year assessments are and how they are being used in various places across the country.

## Welcome by the state superintendent/state commissioner

- + Importance of a balanced assessment system
- + The key role that summative assessment plays
- + Some of the challenges/limitations of summative assessments (include end-user perspectives if possible)
- + Equity implications
- + A vision for the future with your help
- + Today's objectives

---

**Time: 15 minutes**

Notes

---

---

---

---

---

---

---

---

## In small groups: If you could design the perfect summative assessment system what would it look like?

- + How would your teachers describe it?
- + How would your parents describe it?
- + How would your students describe it?
- + Gallery walk of other group's work

---

**Time: 30 minutes**     **Resources:** Use Jamboard (digital) or chart paper (in person) to post ideas.

Notes

---

---

---

---

---

---

---

---



